

# GALACTICA

---

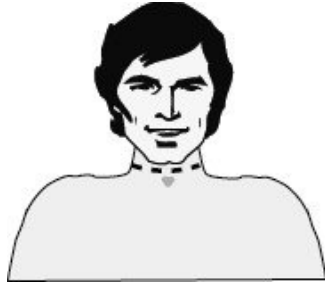
## UNIFORMS

### GALACTICA UNIFORMS guide for Tailor Measurements and Sizing.

Your new **Colonial Uniform** will be a one of a kind. Every aspect of your garment will be cut and tailored uniquely to your personal 'pattern' (from the sizes you submit) to ensure you look your best. The best results are obtained if you wear a T-shirt and track pants. Enlist the help of your partner or friend (you'll find instructions of how to take measurements accurately below).

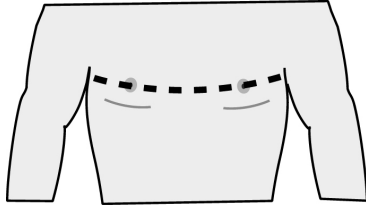
#### **A: NECK**

Measuring tape should be placed around neck around the Adam's apple placing two fingers between your neck and the measuring tape.



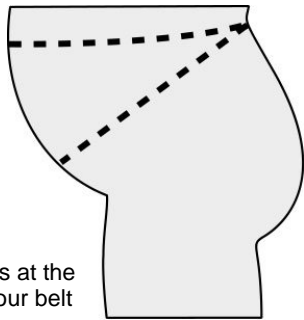
#### **B: CHEST**

Place the tape well up under the arms and over the shoulder blades in back, and the chest in front. Look to make sure the tape is approximately horizontal to the ground. Breathe normally, and insert your finger between the tape and your body to ensure enough ease.



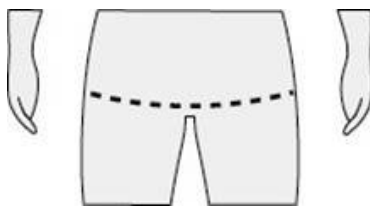
#### **C: WAISTLINE**

Measure around your waist where your trouser belt normally sits. Ensure that the tape is snug and horizontal to the ground.



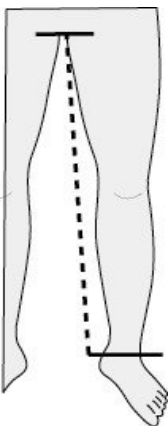
#### **D: BELLY**

Measure from where your belt sits at the back to under your belly where your belt buckle sits.



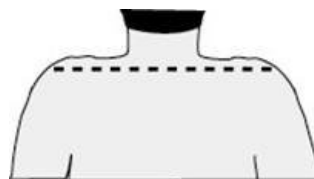
#### **E: HIPS**

Measure around your seat at its widest point.



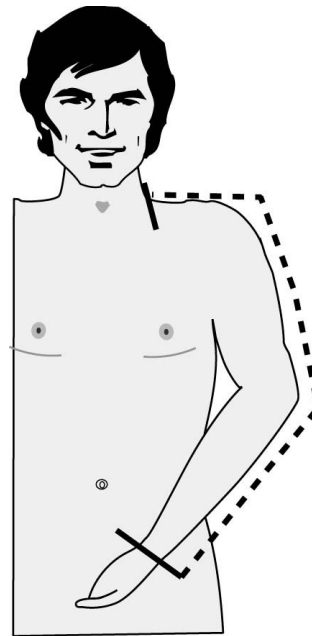
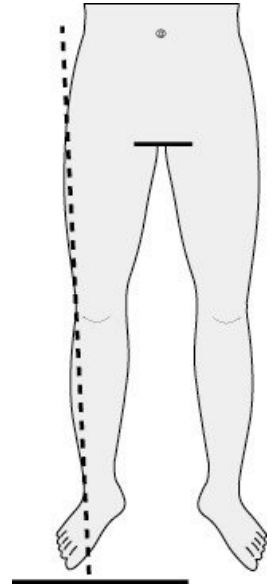
#### **F: INSIDE LEG**

Measure from the top of the inside pants leg to the bottom of the pants hem.



#### **G: OUTSIDE LEG**

Measure from the side of your waist at the beltline to the floor in front of the foot/shoe and then subtract 1 inch.

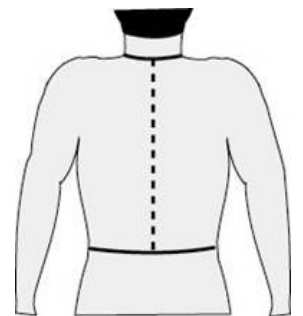


#### **H: SLEEVE**

Bend your arm slightly. Start at the vertebrae in the center of the neck where it meets the shoulder. Run the measuring Tape across the shoulder, down to the elbow, then to the break in the wrist.

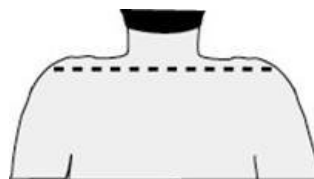
#### **I: CENTER BACK**

Measure from the center of the neck at the collar seam down the center of the back to where the waist band of your trousers usually sits.



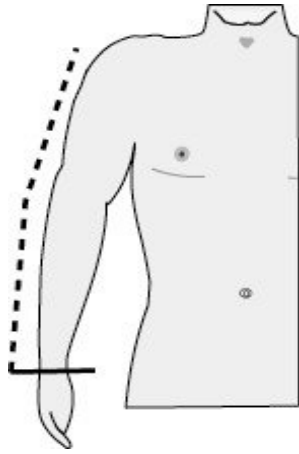
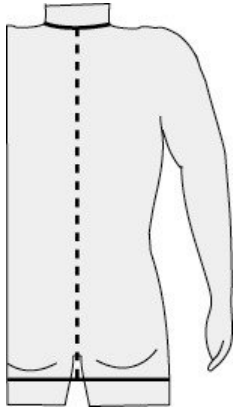
#### **J: SHOULDER TO SHOULDER**

Put on a dress shirt that is a comfortable fit. Take your full shoulder measurement from where the seam on the sleeve joins the back left side to where the seam on the sleeve joins the back right side.



**K: JACKET SLEEVE LENGTH**

Measure the arm from the tip of the shoulder to the wrist including the cuff.



**L: JACKET LENGTH**

Take a measurement from the neckline to the point where the jacket hem is to sit.



**M: CROSS**

Take the measurement from the front waist band of the trousers under the crotch and up to the back of the trousers to the waist band. Allow the tape to hang where your trouser crotch normally sit.

**N: LEFT BICEP**

Measure the circumference of the left bicep between the shoulder and the elbow at it's widest point.

**P: LEFT FOREARM**

Measure the circumference of the left forearm between the elbow and the wrist at its widest point.

**R: LEFT THIGH**

Measure the circumference of the left thigh between the hip and the knee at it's widest point.

**T: LEFT CALF**

Measure the circumference of the left calf between the knee and the ankle at its widest point.

**O: RIGHT BICEP**

Measure the circumference of the right bicep between the shoulder and the elbow at it's widest point.

**Q: RIGHT FOREARM**

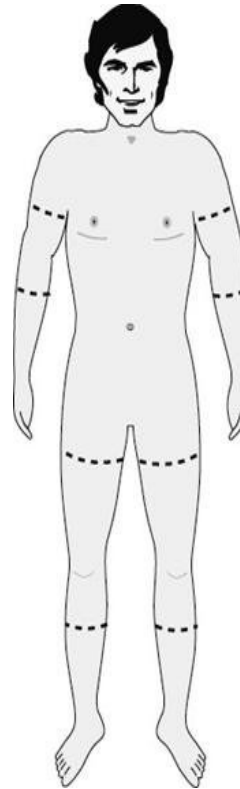
Measure the circumference of the right forearm between the elbow and the wrist at its widest point.

**S: RIGHT THIGH**

Measure the circumference of the right thigh between the hip and the knee at it's widest point.

**U: RIGHT CALF**

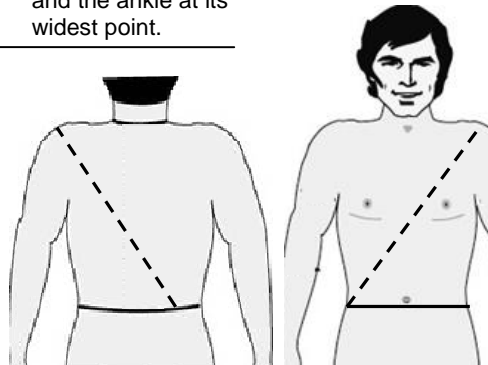
Measure the circumference of the right calf between the knee and the ankle at its widest point.



**X: SHOULDER BELT**

**(FOR GREY UNIFORM ONLY)**

Measure from your right hip (Diagonally) crossing the shoulder and then wrapping around your back to the right hip again.



**PLEASE ENTER YOUR SIZING MEASUREMENTS HERE**

Description	Measurement	Unit/Inch	Description	Measurement	Unit /Inch
<b>A:</b> Neck		( " )	<b>L:</b> Jacket Length		( " )
<b>B:</b> Chest		( " )	<b>M:</b> Cross		( " )
<b>C:</b> Waistline		( " )	<b>N:</b> Left Bicep		( " )
<b>D:</b> Belly		( " )	<b>O:</b> Right Bicep		( " )
<b>E:</b> Hips		( " )	<b>P:</b> Left Forearm		( " )
<b>F:</b> Inside Leg		( " )	<b>Q:</b> Right Forearm		( " )
<b>G:</b> Outside Leg		( " )	<b>R:</b> Left Thigh		( " )
<b>H:</b> Sleeve		( " )	<b>S:</b> Right Thigh		( " )
<b>I:</b> Center Back		( " )	<b>T:</b> Left Calf		( " )
<b>J:</b> Shoulder to Shoulder		( " )	<b>U:</b> Right Calf		( " )
<b>K:</b> Jacket Sleeve Length		( " )	<b>V:</b> Usual Pant Waistline		( " )
			<b>X:</b> Shoulder Belt *		( " )